



Advancing Dentistry

TESTIMONIALS

"I feel The Microlux is an integral device to evaluate dental tissue and should be used routinely in patient care."

James R. Dunn, DDS, Auburn, CA

"Every practice should have the Microlux 2 as part of their diagnosis protocol. It is a great adjunct to radiographs or as a stand-alone option to evaluate suspect areas. Thanks to AdDent for providing such a useful and practical diagnostic tool."

Dr. Douglas Lambert, Edina MO

"I have been using the Microlux for 6 months. I have the regular tip as well as the micro interproximal tip. This has proven to be an invaluable diagnostic tool."

Dr. Jerry Wender, Glastonbury, CT

MICROLUX 2 DIAGNOSTIC SYSTEM

Microlux 2 Transilluminator Kit (3mm): Includes 3mm black glass light guide, batteries	P/N 110080-3
Microlux 2 Transilluminator Kit (2mm): Includes 2mm black glass light guide, batteries	P/N 110080-2
3mm Standard Black Glass Light Guide	P/N 630003
2mm Micro Tip Glass Light Guide	P/N 600045
Pedo Light Guide, 2mm	P/N 110066
Lighted Mirror Attachment 5 Pack	P/N 640056
Microlux Protective Sleeves (Box 250)	P/N 600027
AAA Size Battery (set of 2)	P/N 630002
Endo-Lite with 5 Replacement Light Guides	P/N 640035
Endo-Lite Refill Kit (Qty 45)	P/N 640039
Perio Probe with 5 replacement light guides	P/N 640041
Perio Probe Refills (Qty 45)	P/N 640042
Proximal Caries Attachment with 5 Replacement Light Guides	P/N 640072
Proximal Caries Refill Kit (Qty 45)	P/N 640071

OTHER ADDENT PRODUCTS



◀ CALSET™
Multi-Tray Composite
Warmer
P/N 110007-54



◀ CALSET™
Tri-Tray Composite
Warmer
P/N 110007-12



◀ Bio/Screen
Oral Exam Light
P/N 110090



◀ TRIMAX™
Composite Instrument
P/N 110001



◀ CoMax™
Composite Dispenser
P/N 120000

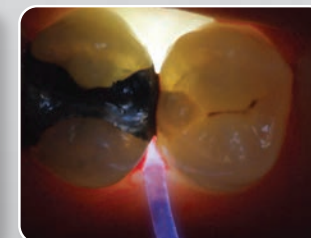


◀ Rite-Lite 2 TriSpectra
Shade Matching Light
P/N 110075
Available Polarizing Filter
P/N 110075-PF

MICROLUX 2™

DIAGNOSTIC SYSTEM

NEW DUAL INTENSITY
TECHNOLOGY



Photos courtesy of Howard E. Strassler, DMD

AD DENT



43 MIRY BROOK RD. DANBURY, CT 06810
203-778-0200 • WWW.ADDENT.COM

12/2017 - P/N 660600

For Research References see: www.addent.com

Advancing Dentistry



Microlux 2 Transilluminator: Available with 2 & 3mm glass light guides which allows doctors to better visualize caries on anterior and posterior teeth.

FEATURES AND BENEFITS

Features:

- Slim Ergonomic Design
- Dual Output Levels
High-5,000 Lux / Low-1,500 Lux
- Conveniently Located Control Button
- Battery Voltage Regulator
- Battery Low Level Indicator
- Fits All Existing Microlux Attachments
- Uses 2 AAA Batteries

Benefits:

- Easy Handling and Anti Rolling
- Easier Visualization of Caries & Cracks
- Easy One Finger Operation
- Constant Light Output
- Battery Replacement Indication
- Multiple Applications with One Device
- Worldwide Battery Availability

Transillumination also helps to visualize:

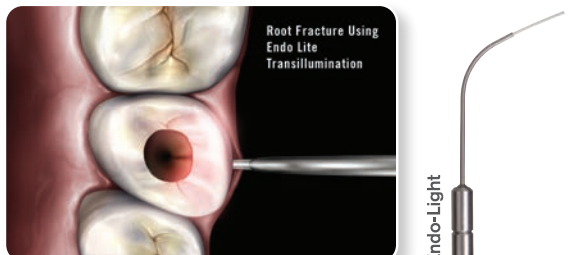
- Crown Fractures
- Root Canal Orifice
- Root Fractures
- All accessories are Autoclavable except for disposable fiber light guides
- Protective sleeves are available



Anterior Caries: Anterior caries can be visualized by placing the probe on the labio-cervical region of the tooth and examine from the lingual. **Shown Above:** 3mm P/N 630003, 2mm P/N 600045, Pedro P/N 110066



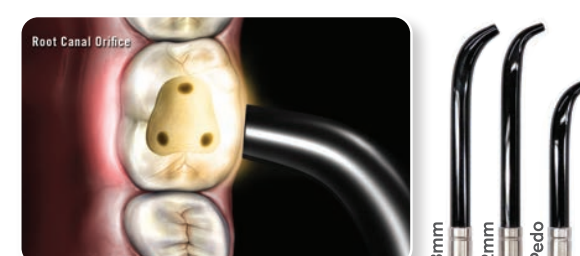
Posterior Caries: To visualize posterior proximal decay, place the probe on the cervical area of the tooth. Caries appear as a dark shadow on the occlusal surface. **Shown Above:** 3mm P/N 630003, 2mm P/N 600045, Pedro P/N 110066



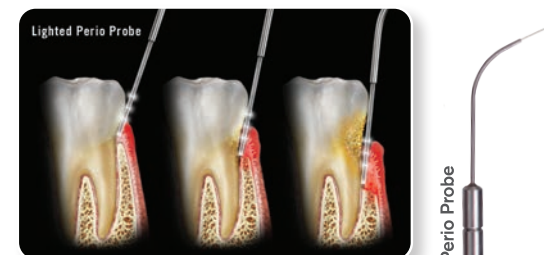
Root Fracture: Root fractures can often be detected by using the Endo Fiber tip. Place it either buccally or lingually in the gingival sulcus. A fracture line will appear dark via transillumination from the outside to the inside of the canal. **Shown Above:** P/N 640035



Posterior Caries: Caries can be also detected using the Proximal Caries fiber tip. Place the lighted fiber tip interproximally under the marginal ridge. View from the occlusal. This method often shows caries with high definition. **Shown Above:** P/N 640072



Root Canal Orifice: To help locate root canal orifice, place the light source on the buccal or lingual cervical region of the tooth. **Shown Above:** 3mm P/N 630003, 2mm P/N 600045, Pedro P/N 110066



Periodontal Disease: To detect the depth of the periodontal pockets and gingival recession, use the lighted Perio Probe and insert the tip in the gingival sulcus. The depth indications are 3, 5, and 7mm. **Shown Above:** P/N 640041